

# Angels We Have Heard On High (Glory Be)

♩ = 128

[Jordan Smith - Angels We Have Heard On High (Glory Be)]

Node:RH20

## Intro

8va  
G C/G Gmaj7 C/G

## Vers 1

G C/G Gmaj7 C/G

An - gels we have heard on high sweet - ly sing - ing o'er the plains

G C/G Gmaj7 C/G

and the moun-tains in re - ply ec - ho - ing their joy - ous

G C/G Gmaj7 C/G

strains

## Vers 2

G C/G Gmaj7 C/G

An - gels we have heard on high Sweet - ly sweet - ly through the night

G C/G Gmaj7 C/G

and the moun-tains in re - ply ec - ho - ing their brief de-light

## Kor

G C G/B D

Glo - ri - a

C D G Break

in ex - cel - sis de o Glo-

2 **Bro**

Em C G/B D

- ry be to God on high and peace on earth for e - ver Glo -

Em C G/B

- ry be to God a - bove and peace on earth and in

*to Coda*

D G C/G Gmaj7 D May

all hearts A - men

**Vers 3**

G C/G Gmaj7 C/G

Sheph-erds why this ju - bi - lee? Why your joy - ous strains pro - long?

G C/G Gmaj7 C/G

What the glad - some ti - dings be which in - spire your heaven - ly song

**Kor'**

G C G/B D

Glo - - - - - ri - a

C D G *D.S al Coda*

in ex - cel - sis de o - Glo -

**Vamp**

Em C G Bm<sup>7</sup>

Solist  
there be peace may there be light mer - cy just - tice for all the world May

S  
Glo - - - - - ri - a

A  
T  
Glo - ry peace to God a - bove

Em C G/D Bm<sup>7</sup>

Solist  
there be truth may there be love and peace on earth and in all hearts may

S  
Glo - - - - - ri - a

A  
T  
Glo - ry peace to God a - bove

2. Bm<sup>7</sup> Em C G/D D

Solist  
all hearts A - men and in

S  
ri - a Glo - - - - - ri - a

A  
T  
bove Glo - ry peace to God a - bove

G C/G Gmaj<sup>7</sup> C/G

S  
Glo - - - - - ri - a

A  
T  
Glo - ry peace to God a - - - bove

**Vers 4**

G C/G Gmaj7 C/G

Come to Bet - le - hem and see Him whose birth the an - gels sing

G C/G Gmaj7 C/G

Come a - dore on ben - ded knee Christ the Lord the new born

G rit.

King

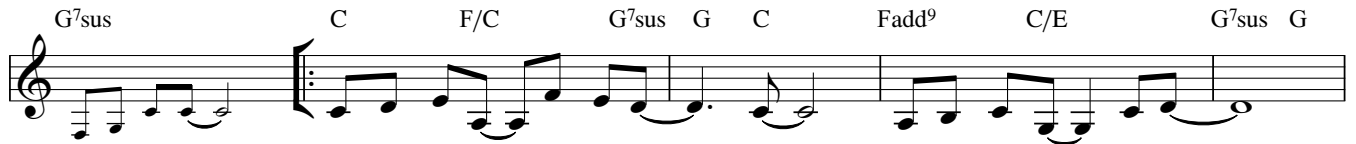
# En Stjerne skinner i nat

Melodi: Tore W. Aas  
node: Rune Herholdt

## intro



## vers

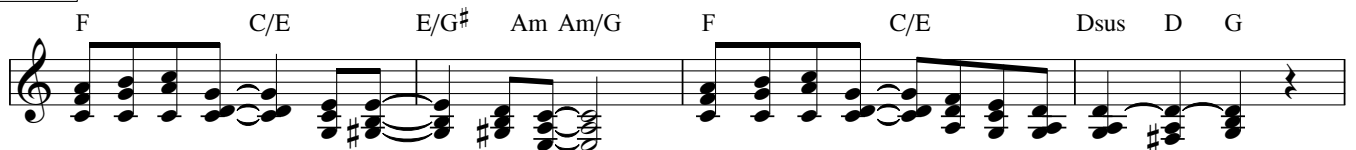


1. Nu er den hel - li - ge ti - me\_ Vi står i stjer - ne skin\_\_  
2. En ny-født kær - lig - hed so - ver\_ Nu er Guds him - mel nær\_\_

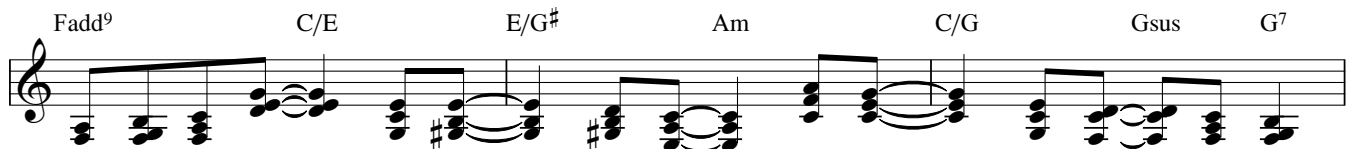


og hø - rer klok - ker - ne ki - me\_ Nu rin - ges ju - len ind\_\_  
Hvor lan - ge van - dring er o - ver\_ Stjer - nen er stand - set her\_\_

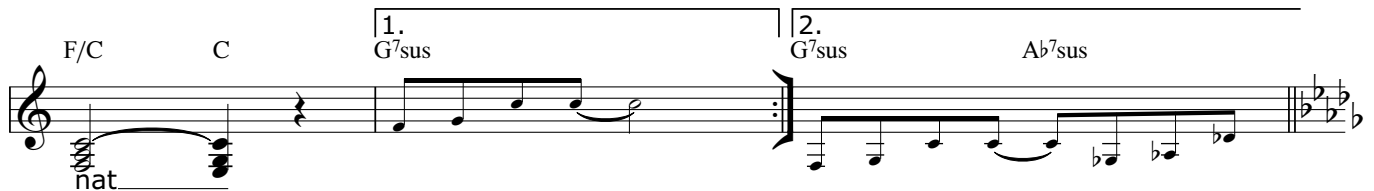
## kor



Eng le - nes syn - ger højt\_ i kor\_ syn - ger om fred\_ på vår\_ jord\_\_



Ver - den var al - drig helt\_ for - ladt\_ en stjer - ne skin - ner i



## vers

Db Gb<sup>9</sup> Ab<sup>7</sup> Db Gb/Bb Db/Ab  
 3. Se him-len lig - ger og hvi - ler\_\_ på jor-dens gu - le\_\_ strå  
 Ab<sup>7</sup>sus A<sup>7</sup> Db Gb/Bb<sub>3</sub> Ab/C Db Gbadd<sup>9</sup> Absus Ab<sup>7</sup> Db  
 — Vi står om kryb-ben og smi - ler\_\_ for vi er frem - me nu\_\_

## kor

Gb Db/F F/H Bb/Bbm/Ab Gb Db/F Ebsus Eb Ab  
 Her kan vi drøm - me om\_\_ den fred\_\_ som vi skal e - je en\_\_ gang\_\_  
 Gbadd<sup>9</sup> Db/F F/A Bbm Gb Db/Ab Ab<sup>7</sup>sus Ab<sup>7</sup>  
 For det - te barn\_\_ har him - len med\_\_ og jor - den fyl - des med  
 Gb/Db Db Gb Db/F Ebm<sup>7</sup>sus Db/F Gbadd<sup>9</sup> Ab<sup>7</sup>sus Ab<sup>7</sup> Gb/Db Db  
 sang\_\_ mmm\_\_

# Happy X-mas

(War is over)

Lennen/Ono  
Node: RH22

♩ = 80

## Vers 1

Solist et.  
Sopran-grp

C Dm

And so this is Christ mas and what have you done An - o - ther year

G C

o - ver a new one just be - gun And so this is

Uhh

F Gm

Christ - mas I hope you have fun The near and the

Uhh Uhh

C F

dear\_\_ ones the old and the\_\_ young

Uhh a ve - ry mer-ry

## Kor 1

Bb C Gm F

Let's hope it's a good one\_\_ with-out a-ny tears And so this is

Christ-mas\_\_ and a hap-py new year\_\_ Uhh

2 **Vers 2**

C Dm G

Christ-mas for weak and for strong the rich and the poor ones The road is so—

Uhh Uhh Uhh

C F Gm

long And so hap-py Christ-mas For black and for white for yel-low and

Uhh Uhh Uhh

C F

red— ones Let's stop all the— fight

Uhh Uhh A ve - ry mer-ry

**Kor 2**

Bb C

Christ-mas— and a hap-py new year— Let's hope it's a

Gm /Bb F G

good one— with - out a - ny tears

**End**

C Dm G C

War is o - ver if you want it war is o - ver now—

S  
A  
T  
B



# Himlen i min favn

Tekst & musik: Carola Haggkvist  
& Erik Hillerstad

Arr.: Lisbeth Sangill og Peter Houe Sørensen

## VERS 1

A.  $B\flat m$   $E\flat m^7$   $A\flat$   $D\flat maj^7$   $G\flat maj^7$

Hvem har tændt den stjer- ne, som spej- les i dit ø- je? Hvem jog mør- ket

6  $E\flat m^7$   $C\emptyset^7$   $F^7(b9)$   $F^7 B\flat m$   $E\flat m^7$

bort i hyr- ders blik din før- ste nat? Hvem har flet tet kro nen af

11  $A\flat$   $D\flat maj^7$   $E\flat m^6$   $B\flat m/D\flat$   $C\emptyset^7$   $F^7$   $B\flat m$

strå om kring din pan de? Hvem har ledt tre vis mænd til vor stald, min kæ re skat?

## OMKVÆD

A.  $B\flat m$   $E\flat m^7$   $A\flat$   $D\flat maj^7$

Er du en af tu- sind små? Er du ham, de ven ter på?

T. Er du, er du en af tu sind små og er du ham, de ven ter

21  $A\flat maj^7$   $E\flat m^7$   $C\emptyset^7$   $F$

Du mit lil - le barn, en en gel gav dig navn.

T. på? lil - le barn, en en - gel gav dig navn.

25  $B\flat m$   $E\flat m^7$   $A\flat$   $D\flat maj^7$

A. Er du jor dens skjul te skat, jeg be skyt- ter her i nat?

T. Er du, er du jor- dens skjul- te skat, som jeg be- skyt- ter her

29  $E\flat m^6$   $B\flat m/D\flat$   $Cm^{11}$   $F7$   $B\flat m$

A. Er det sel - ve him - len, som jeg bæ - rer i min favn?

T.

## VERS 2

1.

33  $B\flat m$   $E\flat m^7$   $A\flat$   $D\flat maj7$

A. Hvem har vakt den ræd - sel, som gør dit hjer - te græ - der?

T.

37  $G\flat maj7$   $E\flat m^7$   $C\emptyset7$   $F7(b9sus4)$   $F7$

A. Hvor for ta'r din hand så hårdt et greb om mo ders hår?

T.

41  $B\flat m$   $E\flat m^7$   $A\flat$   $D\flat maj7$

A. Om os dan - ser skyg - ger. Nu er eng - len bor - te, de

T.

45  $C\emptyset7$   $B\flat m/D\flat$   $C\emptyset7$   $F7$   $B\flat m$

A. skøn ne ord, den tal te, si'r langt mer' end jeg for står.

T.

VERS 3

2.

49 Bbm Ebm7 Ab Dbmaj7

A. Gid, at di- ne da- ge må bli' til an- dres glæ- de.

T.

53 Gbmaj7 Ebm7 Cø7 F7(b9) F7

A. Gid, at du bli'r mødt med kær- lig- hed så mild og god.

T.

57 Bbm Ebm7 Ab Dbmaj7

A. Al- drig vil jeg glem- me de skøn- ne ord, jeg hør- te.

T.

61 Ebm6 Bbm/Db Cø7 F7 Bbm

A. Hvad der end os hæn- der, vil de gi- ve kraft og mod.

T.

OUTRO

3.

65 Bbm Ebm Ab Dbmaj7

A. Hvem har tændt den stjer- ne, som spej- les i dit ø- je?

T.

69 Ebm Bbm F(sus4) F7 Bbm

A. Him - mel - di - a - man - ten o - ver sta - den Bet - le - hem.  
Hvem har ført tre vi - se til vor stald, min kæ - re skat.

rit. - - - - -

# Joy To The World

[Joybells - Gospelfavoriter]

♩ = 100

RHNode:2024

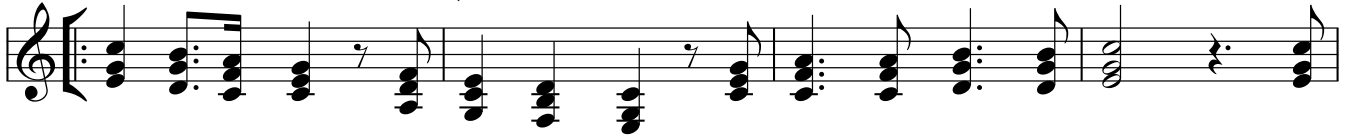
## Intro

C/B $\flat$  G/B C C/B $\flat$  F/A C/G F $\sharp$  $^{\circ}7$  G $^7$  C/G G G $^7$  C



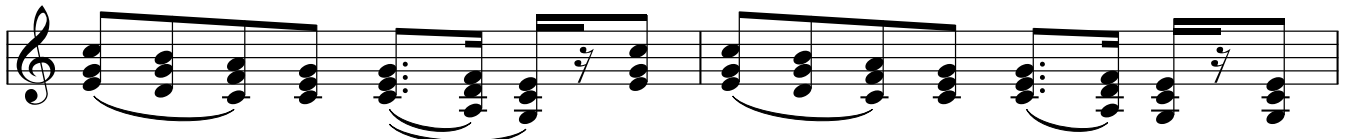
## Vers

C C/G G $^7$  C F Dm $^7$  G C



1. Joy to the world, the Lord is come! Let earth receive her King. Let  
2. Joy to the world, the Saviour reigns! Let men their songs employ. While

C



e fields - very heart pre- pare Him room, and  
and floods. rocks, hills and plains, re-

C/G

G



hea- ven and na ture sing. and\_ hea- ven and na - ture sing, and\_  
peat the sound- ing joy, re - peat - the sound- ing joy, re-

C/E Dm/F C/G

C/G G $^7$

1. C



hea - ven and hea - ven and the na - ture sing.  
peat, re - peat the sound - ing joy.

♩ = 115

2. C



3. C

Gm $^{11}$



## Interlude

C

Gm $^{11}$



Fm<sup>7</sup> Bb<sup>7</sup> Fm<sup>7</sup> Bb<sup>7</sup> Fm<sup>7</sup> Bb<sup>7</sup> Eb<sup>maj7</sup> Ab<sup>maj7</sup> Db<sup>maj7</sup> C<sup>7alt.</sup>

**Vamp 1**

Fm<sup>7</sup> Bb<sup>7</sup> Fm<sup>7</sup> Bb<sup>7</sup> Fm<sup>7</sup> Bb<sup>7</sup> Eb<sup>maj7</sup> Ab<sup>maj7</sup> Db<sup>maj7</sup> C<sup>7alt.</sup>

Joy, joy, joy Joy, joy, joy

**Vamp 2**

Fm<sup>7</sup> Bb<sup>7</sup> Fm<sup>7</sup> Bb<sup>7</sup> Fm<sup>7</sup> Bb<sup>7</sup> Eb<sup>maj7</sup> Ab<sup>maj7</sup> Db<sup>maj7</sup> C<sup>7alt.</sup>

Joy, joy, joy, Joy, joy, joy, Joy, joy, joy, Joy, joy, joy,

**Vamp 3**

*Chords cont.*

Joy, joy, joy, joy, Joy, joy, joy, joy, Joy, joy, joy, joy, Joy, joy, joy, joy.

**Vamp 4**

*Fm<sup>7</sup> Break*

1. Eb<sup>maj7</sup> Ab<sup>maj7</sup> Db<sup>maj7</sup> C<sup>7alt.</sup>

Joy, joy, joy, joy, Joy, joy, joy, joy Joy, joy, joy, joy, Joy, joy, joy, joy

**Vamp 5**

Fm<sup>7</sup> Bb<sup>7</sup> Fm<sup>7</sup> Bb<sup>7</sup> Fm<sup>7</sup> Bb<sup>7</sup> Eb<sup>maj7</sup> Ab<sup>maj7</sup> Db<sup>maj7</sup> C<sup>7alt.</sup>

Joy, joy

**Vamp 6**

Fm<sup>7</sup> Bb<sup>7</sup> Fm<sup>7</sup> Bb<sup>7</sup> Fm<sup>7</sup> Bb<sup>7</sup> Eb<sup>maj7</sup> Ab<sup>maj7</sup> Db<sup>maj7</sup> C<sup>7alt.</sup>

Joy, joy, joy, joy

*rit.*

2. Eb<sup>maj7</sup> Ab<sup>maj7</sup> Dm<sup>7</sup> G<sup>7(sus4)</sup> C F<sup>6</sup> C/G G C

Joy, joy, joy, joy, Joy, joy, joy, joy. Joy to the world, the Lord is come!

# The King Has Come

The Brooklyn Tabernacle Choir

Carol Cymbala, Onaje Jefferson

♩=118

## INTRO

Db Db/F Gb Ab Bbm7 Ab/C

5 Db Db/F Gb Ab Bbm7 Cb(add2)

The

## VERSE DUET

9 Db Db/F Gb Ab Bbm7 Ab/C

King has come let's mag - ni - fy\_\_ Him, He is born\_\_ this day.\_\_

13 Db Db/F Gb Ab Bbm7 Cb(add2)

Come, bow down and wor ship, wor-ship the name a - bove all names.\_\_ The

17 Db Db/F Gb Ab Bbm7 Ab/C

ho - ly child, a gift from hea - ven, come let us\_\_ a- dore.\_\_ The

21 Db Db/F Gb Ab Bbm7 Cb(add2)

King has come, let's wor-ship, wor-ship Je - sus Christ, the Lord\_\_ We will re jice

## CHORUS DUET

25 Db Db/F Gb Ab Bbm7 Ab/C

\_\_ and sing\_\_ His\_\_ praise, sing\_\_ His\_\_ praise to geth - er. We will re jice

29 Db Db/F Gb Ab Bbm7 Cb(add2)

\_\_ and bless\_\_ His\_\_ name, the Lord,\_\_ He reigns for - e - ver We will re jice.

33 Db Db/F Gb Ab Bbm7 Ab/C

Mhh\_\_ mm\_\_ m We will re - jice.\_\_

37 Db Db/F Gb Ab Bbm7 Cb(add2)

The

**VERSE SAT**

41 E E/G# A H C#m7 H/D#

King has come let's mag - ni - fy Him, He is born\_\_this day.\_\_

45 E E/G# A H C#m7 D(add2)

Come, bow down and wor-ship, wor-ship the name a - bove all names.\_\_ The

49 E E/G# A H C#m7 H/D#

ho - ly child, a gift from hea - ven, come let us\_\_ a - dore.\_\_ The

53 E E/G# A H C#m7 D(add2)

King has come, let's wor-ship, wor ship Je - sus Christ, the Lord.\_\_ We will re - joi ce

**CHORUS SAT**

57 E E/G# A H C#m7 H/D# E E/G#

\_\_ and sing\_\_ His praise, sing\_\_ His praise to - geth - er. We will re-joyce\_\_ and bless

62 A H C#m7 D(add2) D(add2) Bb/D C/E

\_\_ His\_ name, the Lord,\_\_ He reigns for-e - ver We will re-joyce. ver A: We will re-joyce.

**CHORUS 3**

66 F F/A Bb F/C Dm7 C/E

T: Re - joi ce. S: Re- joi ce. A: We will re-joyce.

70 Dm7 C/E F C F/A Bb Eb(add2) Db7(sus4)

T: Re - joi ce. S: Re - joi ce. We will re-joyce.

**CHORUS 4**

74  $G\flat$   $A\flat m^7$   $G\flat/B\flat$   $C\flat$   $D\flat$   $E\flat m^7$   $D\flat/F$   
*Soloist fills*  
 Re - joi-ce... Re - joi-ce... We will re-joyce.

78  $E\flat m^7$   $D\flat$   $G\flat/B\flat$   $C\flat$   $F\flat(\text{add}2)$   $D\flat/F$   
 Re-joyce... Re-joyce... the Lord, He reigns for-e - ver We will re-joyce.

**ENDING**

82  $G\flat$   $G\flat/B\flat$   $C\flat$   $D\flat$   $E\flat m^7$   $D\flat/F$   $E\flat m^7$   $G\flat$   $D\flat$   $G\flat/B\flat$   
*Soloist fills*  
 We will re-joyce. and bless His name, the Lord,

88  $C\flat$   $F\flat(\text{add}2)$   $G\flat$   
 He reigns for e - ver and e - ver, for e - ver, re joi-ce!  
 S: A: T:



# LOVE FROM A STAR

KIRK WHALUM - THE CHRISTMAS MESSAGE

♩=93

## INTRO

G(ADD2) D/F# Em<sup>9</sup> Bm<sup>7</sup> Am<sup>7</sup> C/D  
 5 G(ADD2) D/F# Em<sup>9</sup> Bm<sup>7</sup> Am<sup>7</sup> C/D

## VERSE

9 G(ADD2) Am<sup>7</sup>/G

CO - LOR-LIGHTS AND SNOW FLAKES DAN - CING IN THE WIND IT'S A -  
 THE WORLD IS FULL OF SAD-NESS SO MUCH PAIN AND TRA - GE - DY STILL THERE

13 Cm/G Cm<sup>6</sup>/G G(ADD2) Cm/G

NO - THER CHRIST - MAS HO - LI - DAY A - BOUT TO BE - GIN  
 SHINES A STAR OF HOPE IN - SIDE YOU AND ME

17 G(ADD2) Am<sup>7</sup>/G

CAN-DY CANES AND PRE - SENTS CAR - OLS ROUND THE THREE AND ON  
 IF WE COULD JUST BE BLIND-ED BY WHAT TEARS US ALL A - APART WE COULD

21 Cm/G Cm<sup>6</sup>/G G(ADD2) G(ADD2) Am<sup>7</sup>

TOP A SIL - VER STAR IS SHI - NING IS ON THE WORLD AT PEACE IT'S MY  
 SEE BE - YOND THE OUTSIDE AND LOOK STRAIGHT INTO THE HEART FOR WHAT

25 G(ADD2)/B C G/B Am<sup>7</sup> G G/B Am<sup>7</sup> G D

FA - VORITE TIME OF YEAR FOR REA - SONS NOT SO PLAIN TO  
 CHRIST - MAS MEANS IS MORE THAN JUST SOM TIN - SEL ON A TREE

28 C(ADD2) G/B Am Am(maj7) Am<sup>7</sup> C/D

SEE 'CAUSE A LONG A-GO ON CHRIST-MAS EVE LOVE WAS BORN FOR ME YOU WERE IN HEA

2 CHORUS

33 G D/F# Em<sup>9</sup> Bm<sup>7</sup>

- VEN I WAS ON EARTH\_ WHEN I NEED

37 Am<sup>7</sup> C/D

- ED\_ YOU\_ HERE\_ YOU SENT A BA - BY\_ SO\_ DEAR IN\_ A MAN

41 G D/F# Em<sup>9</sup> Bm<sup>7</sup>

- GER ON\_ THE HAY\_ YOU SEND ME LOVE

45 Cmaj<sup>7</sup> Em<sup>7</sup> Am<sup>7</sup> C/D G(ADD2)

FROM A STAR\_ ON CHRIST - MAS DAY\_

INTERLUDE

49 G(ADD9) D/F# Em<sup>9</sup> Bm<sup>7</sup>

53 Am<sup>7</sup> C/D D.S AL CODA

IN\_ A MAN -

CODA

57 Am<sup>7</sup> D#<sup>o</sup> Em<sup>7</sup> G/B A<sup>7</sup> Am<sup>7</sup>

ON CHRIST-MAS DAY\_ YOU SEND ME LOVE\_ FROM A STAR

61 C/D Bm<sup>7</sup> Am<sup>7</sup> C/D E/D

LOVE\_ FROM A STAR\_ YOU SEND ME LOVE\_

# LOVE FROM A STAR

3

64 Am7 C/D TO INTRO

FROM A STAR ON CHRIST - MAS DAY

**OUTRO**

66 G(ADD2) D/F# Em<sup>9</sup> Bm<sup>7</sup> Am<sup>7</sup> C/D

70 G(ADD2) D/F# Em<sup>9</sup> Bm<sup>7</sup> Am<sup>7</sup> C/D G(ADD9) MOLTO RIT.

## VERSE 2

THE WORLD IS FULL OF SADNESS  
 SO MUCH PAIN AND TRAGEDY  
 STILL THERE SHINES A STAR OF HOPE  
 INSIDE OF YOU AND ME  
 IF WE COULD JUST BE BLINDED  
 BY WHAT TEARS US ALL APART  
 WE COULD SEE BEYOND THE OUTSIDE  
 AND LOOK STRAIGHT INTO THE HEART

FOR WHAT CHRISTMAS MEANS  
 IS MORE THAN JUST SOME TINSEL ON A TREE  
 LONG AGO ON CHISTMAS EVE  
 LOVE WAS BORN FOR ME

# Mary Did You Know

[Christ Church Choir]

Node:RH21

Buddy Greene / Mark Lowry

♩ = 60

## Intro

Bbm Bbm/Ab Ebm<sup>6</sup> F(sus4)

Bbm Fm/Ab Gbmaj<sup>7</sup> Bbm/F

Cb/Eb E<sup>o7</sup> F7(sus4) ♩ = 80  
Ma-ry did you

## Vers 1+2

Bbm Ab Ebm<sup>7</sup> Fm<sup>7</sup>

know that your ba - by Boy will one day walk on wa - ter? Mar-ry did you  
know that your ba - by Boy will give sight to a blind man? Ma-ry did you

Bbm Ab Ebm<sup>7</sup> Fm<sup>7</sup>

know that your ba - by Boy will save our sons\_ and daugh - ters? Did you know  
know that your ba - by Boy will calm a storm with His hands? Did you know

Ebm7 Ab

— that your ba - by Boy has  
 — that that your ba - by Boy has

Db Ab/C Bbm Fm/Ab

come to make you new? This  
 walked where an - gels trod? When you

Ebm7 Ebm9 F7(sus4) 1. F7

child that you de - liv - ered will soon de - liv - er you...  
 kiss your lit - tle Ba - by, you've kissed the face of God

Cbmaj7 Abm9 F7(sus4)

Marydidyou

**Bro** 2. F7 Bbm Ab(add9) Ebm7

Ma - ry did you know

F7(sus4) F7 Bbm Ab(add9) Ebm7

Åååhhh

F7(sus4) F7 Gb Ab Bbm Bbm/Ab Ab

The blind will see the deaf will hear, the dead will live a -

G♭maj7 B♭m/F G♭/B♭ A♭/B♭

gain The lame will leap the dumb will speak the

B♭m E♭m/G♭ F7(sus4) F(sus4)/C F

prais - es of the Lamb!

**Vers 3**

B♭m A♭ E♭m7

Ma-ry did you know That your ba - by Boy is Lord of all cre - a -

Fm7 B♭m A♭ E♭m7

- tion Ma-ry did you know that your ba - by Boy will one day rule the na

Fm7 E♭m7 A♭ D♭ A♭/C

- tion Did you know that your ba - be Boy is heav-en's per - fect lamb

B♭m Fm/A♭ E♭m7 E♭m9 B♭m/F

And this slee - ping child you're hold - ing is the great

F7 B♭m G♭maj7 E♭m7 G♭maj7/D♭

I AM

E♭m/C B♭m/F F7/A B♭m

the great I AM.

# Noel

Chris Tomlin

Chris Tomlin

♩ = 69

## Intro

Am

## Vers 1

S+A

Am

1. Love in-car-nate, love di-vine, — star and ang-els gave the sign.

6 — Bow to babe on ben-ded knee, — the Sa-vior of hu-man ni-ty.

11 Fmaj7 — Un-to us a Child is born, — Dm7 He shall reign for-e-ver-more. — No -

Un-to us a Child is born, — He shall reign for-e-ver-more. — No -

Un-to us a Child is born, — He shall reign for-e-ver-more. —

## Omkvæd 1

15 C — el, Am No - el, F come and se what God\_ has done. — C No - el, C No - el, Am the

el, No - el, come and se what God\_ has done. — No - el, No - el, the

come and se what God\_ has done. — No - el, No - el, the

21 F

C

sto - ry of a - ma - zing love. The light of the world

sto - ry of a - ma - zing love. The light of the world

sto - ry of a - ma - zing love. The light of the world

23 G

Dm<sup>7</sup>

Fmaj<sup>7</sup>

— gi - ven for us, No - el.

— gi - ven for us, No - el.

— gi - ven for us, No - el.

Vers 2

27 Am

2.Son of God and Son of man,

2.Son of God and Son of man, there be - fore the world be - gan.

2.Son of God and Son of man,



30

there be - fore the world be - gan.\_\_\_\_ Born to suf - fer, born to shame,  
 Born to suf - fer, born to shame,\_\_\_\_  
 there be - fore the world be - gan.\_\_\_\_ Born to suf - fer, born to shame,  
 Am G/H C C/E Fmaj7 C/E

33

raise us from the grave, Lord\_\_\_\_  
 born to raise us from the grave.\_\_\_\_ Christ, the e - ver-last-ing Lord,\_\_\_\_  
 raise us from the grave, Lord\_\_\_\_

**Omkvæd 2 + 3**

37 Dm7

E-ver-more, No - el, No - el, come and see what God has done  
 He shall reign for-e-ver-more.\_\_\_\_ No el, No - el, come and se what God has done.  
 E-ver more, No - el, No - el, come and se what God has done.



4

42 C C Am F C *S*

— No - el, No - el, the sto-ry of a - ma - zing love\_\_\_ The light of the world

— No - el, No - el, the sto-ry of a - ma - zing love\_\_\_ The light of the world

— No - el, No - el, the sto-ry of a - ma - zing love\_\_\_ The light of the world

INTERLUDE

47 G Dm<sup>7</sup> Fmaj<sup>7</sup> Am *2. + S1*

— giv-en for us\_\_\_ No - el\_\_\_ 3.+4.Ding, dong- ding\_\_\_

— gi-ven for us,\_\_\_ No - el.\_\_\_ 1.Hark!How the bells, sweet sil-ver bells, all seem to

— gi-ven for us,\_\_\_ No - el. 2.Hark!How the bells, sweet sil-ver bells, all seem to

52 C Fmaj<sup>7</sup>

— dong Christ-mas is here\_\_\_ Ding, dong\_\_\_ ding\_\_\_

say, throw cares a - way, Christ-mas is here\_\_\_ Christ-mas is here, bring - ing good cheer to young and

say, throw cares a - way, Christ-mas is here\_\_\_ Christ-mas is here, bring - ing good cheer to young and

54 1.2.3. 4. *D.S. al Coda*

— dong Oh Yes — dong Oh No

old, meak and the bold. 1.Hark how old, meak and the bold. Oh No  
2.Ding dong yes

old, meak and the bold. 1.Ding dong — old, meak and the bold. Oh No  
2.Oh yes —

56 *Fmaj7* *Dm<sup>9</sup>* *Am*

No - el. No - el.

No - el. No - el.

el. No - el. No - el.

61 *Fmaj7* *C*

No - el. No - el.

No - el. No - el.

No - el. No - el.

# Now is the season

♩ = 120

Rune Herholdt / Peter Houe Sørensen

## Intro

B $\flat$  F $\sharp$ ° Gm $^7$  Dm $^7$  E $\flat$  B $\flat$ /F F

## Vers

B $\flat$  F $\sharp$ ° Gm $^7$  Dm $^7$  E $\flat$  B $\flat$ /F F

1. Now is the sea-son of love\_\_\_ now, is the sea-son of hope\_\_\_ for you\_\_\_  
 2. Rule King of Heav-en and earth\_\_\_ rule\_\_\_ and guide us in faith - ful - ness\_\_\_  
 3. Come join the cho-rus a bove\_\_\_ come sing a song of joy and love\_\_\_

B $\flat$  F $\sharp$ ° Gm $^7$  Dm $^7$  E $\flat$  1. B $\flat$ /F F

Love was born from a - bove\_\_\_ Love in a man-ger will see\_\_\_ you through\_\_\_  
 Free shaping shame in - to worth\_\_\_ free you're heal-ing my brok -  
 Raise holy hands\_ and sing\_\_\_ raise up your faith and let prais -

2. 3. B $\flat$ /F F F $\sharp$ ° Gm $^7$  Dm $^7$  E $\flat$  Dm $^7$  Cm $^7$  B $\flat$ /F F F $\sharp$ °

en-ness Em - ma - nu - el You are our might-y Lord and King Re-  
 ses\_ring Em - ma - nu - el You are our mighy-y Lord and King Re-

Gm $^7$  Dm $^7$  E $\flat$  Dm $^7$  Cm $^7$  B $\flat$ /F F

joice all earth and let the sound-ing cym-bals ring  
 joice all earth and let the sound-ing cym-bals ring

## Bro

B $\flat$ /A $\flat$  E $\flat$ /G E $\flat$ m/G $\flat$  B $\flat$ /F

Won-der - ful coun - se - lor lor migh - ty God

Bb/Ab Eb/G Ebm/Gb Bb/F

e - ver - las - ting Fath - er Prin - ce of peace

Bb/Ab Eb/G Ebm/Gb Bb/F

Won - der - ful coun - se - lor lor migh - ty God

Bb/Ab C/G C/E D/F# Gm Ebm/Gb

e - ver - las - ting Fath - er Prince of peace

**Vamp**

Bb/F Eb/F

We love\_ You we love\_ You a - dore\_ You a - dore\_ You

Bbmaj7/F Cm Bb/D Ebm

Pro - claim You pro - claim You Prince of peace

Bb/F Eb/F

we love\_ You we love\_ You a - dore You a - dore You

Glo - - - - Glo - - - - Glo - - - -

Bbmaj7/F Cm7 Bb/D Ebm

pro - claim You pro - claim You Prince of peace

Glo - - - - ri - a - - - -

**D.C. al coda**

# Nu tændes tusind julelys/Lys i mørket

♩ = 72

Node: PH/RH 19

## INTRO Nu tændes

## VERS 1+2

F C/F Bb/F F C/F Bb/F F Bb/F F Bb/F F Bb G/H

*Kor unisont* 1. Nu tændes tusind julelys på jorden stor og  
o-ver by og land i dag går jul-lens glade

8 C F/A C7/G F F/A Bb C C7 1. F

rund som tusind-vis af stjerner gror på himlens mørke grund. 2. Og  
bud, at født er Herren Jesus Kristus, vor frelser og vor

## INTRO Lys i mørket

13 2. Dm Am/C Bbmaj7 Bb6 F(add9)/A F/A Gm7 C7/G Dm9/F Dm/F Ebmaj7

Gud.

17 Dm Am/C Bbmaj7 Bb6 F(add9)/A F/A Gm7 C7/G Dm9/F Dm/F Ebmaj7 C(sus4) C

Aa Aa

## VERS 1

22 Dm Am Bb F(add9) Dm Am/C Bb F(add9)

*Solist 1:* Det er nat i Betlehem En hersker samler sine mænd Går fra  
26 Bb/D C/E A/C# Dm Bb Gm7 C(sus4) C  
dør til dør de har gjort det før mange unge hjerter dør

## VERS 2

30 Dm Am Bb F(add9) Dm Am/C Bb F(add9)

*Solist 2:* Nu kommer himmelri- get nær In- gen kamp og smer- te her Her den  
34 Bb/D C/E A/C# Dm Bb Gm7 C(sus4) C  
un- ge mor un- der him- len stor fø- der bar- net til vor jord Lys i

## OMKVÆD

38 Gm/F F C/D Dm Bb Gm7 C(sus4) C

mør- ket tændt er hå- bets flam- me Den- ne nat så mørk og kold Lys i  
42 Gm/F F C/D Dm Bb C(sus4) C  
mør- ket kær- lig- he- dens stem- me Født på jor- den i en stald.

45 Dm Am/C B♭maj7 B♭6 F<sup>9</sup>/A F/A Gm<sup>7</sup> C<sup>7</sup>/G Dm<sup>9</sup>/F Dm/F E♭maj7 C(sus4) C

Aa

**VERS 3**

50 Dm Am B♭ F(add9) Dm Am/C B♭ F(add9)

*Kor unisont:* Stem-men hvis-ker ord om fred Bry-der jor-dens mør-ke ned Her den

54 B♭/D C/E A/C# Dm B♭ Gm<sup>7</sup> C(sus4) C

un - ge\_\_mor un-der stjer - nen\_\_stor bæ-rer ly - set til vor jord Lys i

**OMKVÆD**

58 Gm/F F C/D Dm B♭ Gm<sup>7</sup> C(sus4) C

mør - ket tændt er hå - bets flam - me Den - ne\_\_ nat så mørk og kold Lys i

62 Gm/F F C/D Dm B♭ C(sus4) C Dm Am/C

mør - ket kær-lig - he - dens stem - me Født på jor - den i\_\_ en\_\_ stald.

**molto rit. . . . A tempo** **OMKVÆD**

66 A(sus4) A Hm<sup>7</sup> A/C# D(sus4) D D(sus4) D Am/G G D/E Em C Am<sup>7</sup>

Lys i mør-ke tændt er hå-bets flam-me Den-ne\_\_ nat så mørk og

70 D(sus4) D Am/G G D/E Em C D(sus4) D Em D/F#

kold Lys i mør-ke kær-lig-he - dens stem-me Født på jor - den i\_\_ en stald\_\_ 3.Du

**VERS 2+3 Nu tændes**

75 G D<sup>7</sup>/A G/H C G C A D G/H D<sup>7</sup>/A G G/H C

stjer-ne o - ver Bet - le - hem o, lad dit mil - de lys nå vidt om-kring med håb og fred i  
hvert et hjer-te koldt og mørkt send du din strå - le blid, en strå - le med Guds kær lig - hed i

81 D D<sup>7</sup> 1. G 2. G D/G C/G G D/G rit. C/G G

hvert et hjem og hus. 4.I  
den - ne jul - le - tid.

# Silent Night

Gospel waltz  
9/8 = 60 bpm

Arr: Maria Carey  
Node: Rune Herholdt 2012

## Intro

8va -----

Bb/F F7 Cm/G F#° Gm C7 Ebm<sup>6</sup> 3

## KOR

Bb/F F7 HUUU Eb/Bb Ebm<sup>6</sup>/Bb hUUU Bb F7 3

## A

Bb Gm<sup>7</sup> C<sup>9</sup>  
Si - lent night, Ho - ly night.  
Si - lent night, Ho - ly night.

F7 F#°7 Gm Fm<sup>7</sup> Bb<sup>7</sup>  
All is calm, all is pure bright  
Son of God love's light

Eb Cm<sup>6</sup> Bb/D Dm/C Bb Ab/C Bb/D  
'Round yon virgin from mother and child  
Ra - dian beams from thy ho - ly face

Eb Cm<sup>6</sup> Bb/D Dm/C Gm<sup>7</sup> C<sup>9</sup>  
Ho - ly in - fant so - ten - der and mild  
with the dawn of re - deem - ing grace



F7 A $\emptyset$ 7 D7 Gm C $\supset$  Cm $\supset$ /Gb Bb/F 1. F Bb Eb/Bb Bb F7

Sleep in heav-en-ly peace  
Je-sus Lord at thy birth

**Vamp**

2. F F $\sharp$ o Gm A $\emptyset$ 7 D7 Fm $\supset$  Bb7 Ebmaj7 Ab7

Lord at thy birth. Sleep sleep in Heav-en-ly peace

Bb/F C7 A $\emptyset$ 7 D7(b9) Fm $\supset$  Bb7 Ebmaj7 Ab7

sleep sleep in Heav-en-ly Heav-en-ly peace

1g sopran / 2g S+A / 3g. SAT

Bb/F Eb/F

Sleep in heav-en-ly

Eb/Bb Bb

peace